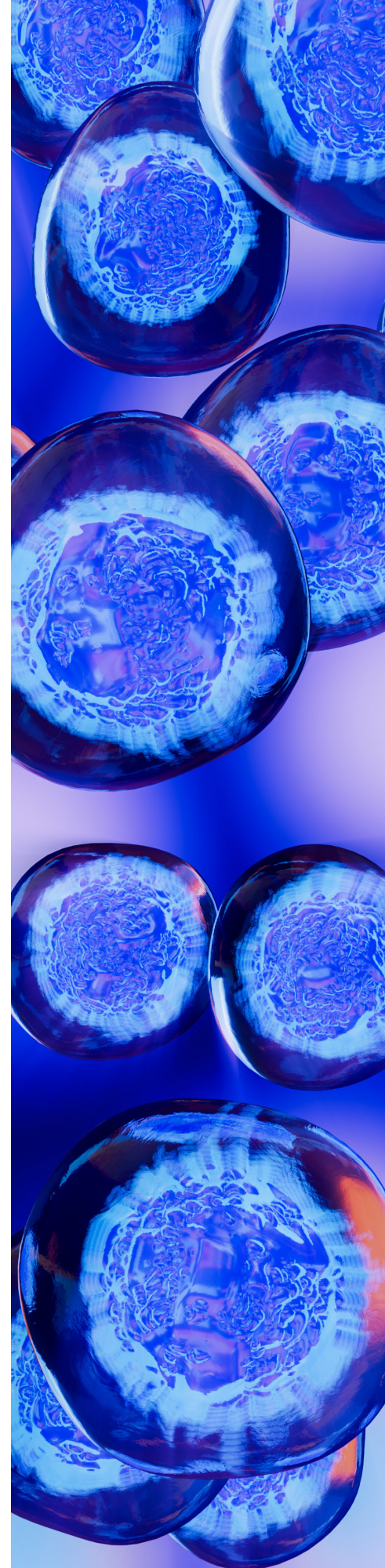


Stem Cell Day

Tuesday, October 29, 1-5pm

- 1–1:20 p.m. **Refreshments and networking**
- 1:20–1:25 p.m. **Len Zon's welcome**
- 1:25–1:32 p.m. **High-Resolution Lineage Tracing in Native Tissue**
Stem Cell Program
Fernando Camargo
- 1:32–1:39 p.m. **Investigating Pediatric Pulmonary Diseases Using Induced Pluripotent Stem Cell-Derived Airways**
Pulmonary
Ruby Wang
- 1:39–1:46 p.m. **Modulation of Dystrophic Severity Through a Tetraspanin**
Program in Genomics
Emanuela Gussoni
- 1:46–1:53 p.m. **Functional Roles of Cell Surface GlycoRNAs**
Stem Cell Program
Ryan Flynn
- 1:53–2 p.m. **Nucleotide Metabolism Constrains Human Telomere Length**
Hematology/Oncology
Suneet Agarwal
- 2–2:07 p.m. **Partitioning of the Nkx2.5+ Anterior Lateral Plate Mesoderm Precedes Cardiovascular Lineage Diversification**
Cardiology
Caroline Burns
- 2:07–2:14 p.m. **Oncogenic tRNA and Codon-Biased mRNA Translation**
Stem Cell Program
Richard Gregory
- 2:14–2:21 p.m. **Neuroimmune-Competent Organoid Model of Brain Tumor**
Neurosurgery
Xin Tang
- 2:21–2:28 p.m. **Origin and Identity of Neonatal Regenerative Cardiomyocytes**
Cardiology
Miao Cui
- 2:28–2:35 p.m. **Design of a Multivalent Notch Agonist**
Stem Cell Program
Rubul Mout
- 2:35–2:42 p.m. **Suspension Culture-Derived Organoid Models of Cardiac Development**
Cardiology
Maksymilian Prondzynski
- 2:42–3 p.m. **Break**



- 3–3:07 p.m. Tailor-Made Sensory Organs**
Otolaryngology
Karl Koehler
- 3:07–3:14 p.m. Extrinsic Regulation of Developmental HSPC Fate**
Stem Cell Program
Trista North
- 3:14–3:21 p.m. Therapeutic Horizon for iPSCs in Orthopedics**
Orthopedic Surgery
April Craft
- 3:21–3:28 p.m. Understanding Human Intestinal Stem Cell Differentiation**
Endocrinology
Daniel Zeve
- 3:28–3:35 p.m. Live Cell Imaging Applications in Stem Cell Biology**
Stem Cell Program
Thorsten Schlaeger
- 3:35–3:42 p.m. Transamniotic Stem Cell Therapies**
Surgery
Dario Fauza
- 3:42–3:49 p.m. Rapid Assessment of Cardiovascular Risk Variants with iPSCs**
Cardiology
Vassilios Bezzerides
- 3:49–3:56 p.m. Organoid Modeling of Early Stage Lung Cancer**
Stem Cell Program
Carla Kim
- 3:56–4:03 p.m. Quantitative Decoding of Transcriptional Regulation in Development and Disease**
Gastroenterology
Sahin Naqvi
- 4:03–4:10 p.m. Prioritization of Rare Disease Casual Variants and Genes with AlphaFold Predictome**
Pediatrics (Molecular Medicine) & BCMP
Piotr Sliz
- 4:10–4:17 p.m. iPS-Derived Niche Endothelial Cells for Blood Stem Cell Engraftment**
Stem Cell Program
Leonard Zon
- 4:17–4:20 p.m. Len Zon's closing remarks**
- 4:20–5 p.m. Sushi**

